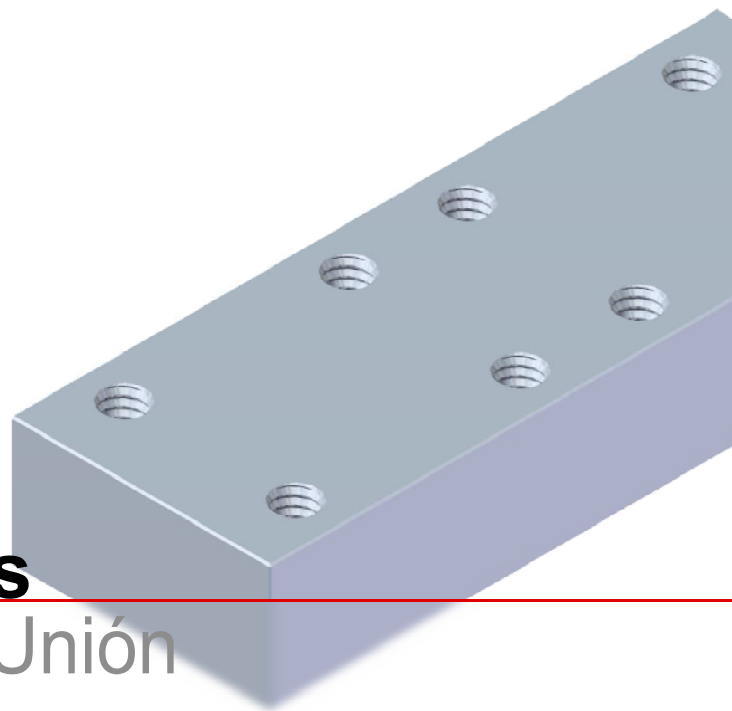
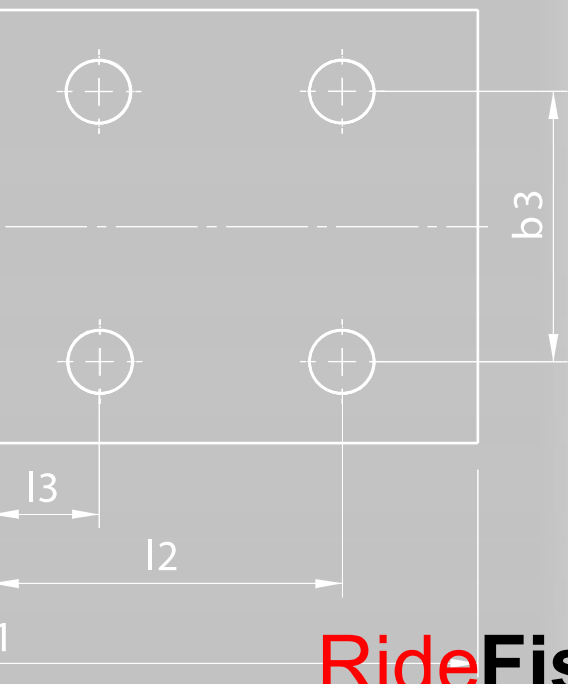


Accessories Accesorios



RideFishplates

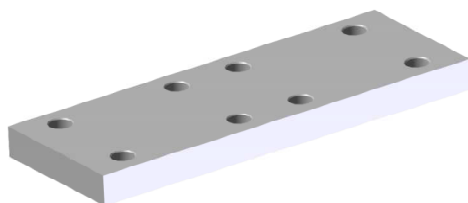
Placas de Unión



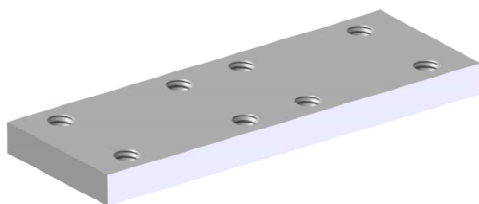
Elevator System Solutions

RideFishplates

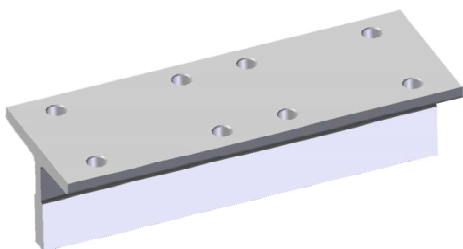
Placas de Unión



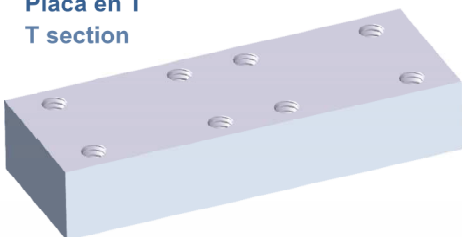
Estándar
Standard



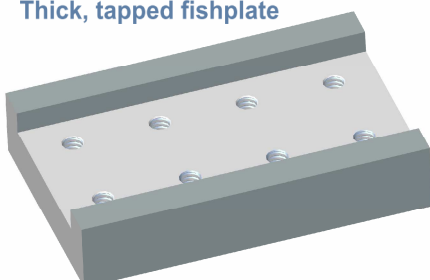
Roscada
Tapped



Placa en T
T section



Placa gruesa roscada
Thick, tapped fishplate



Placa en U
U shape

Estándar

Disponible en diferentes espesores según tabla y en otros espesores bajo pedido.

Standard

Available in various thicknesses as shown in the chart below. Other thicknesses available on request.

Roscada

Para reducir la zona ocupada por el tornillo y la tuerca. Disponible en espesores según tabla y en otros espesores bajo pedido.

Tapped

To reduce the area occupied by the screw and nut. Available in various thicknesses as shown in the chart below. Other thicknesses available on request.

Placas con el mismo momento de inercia que la guía STAR

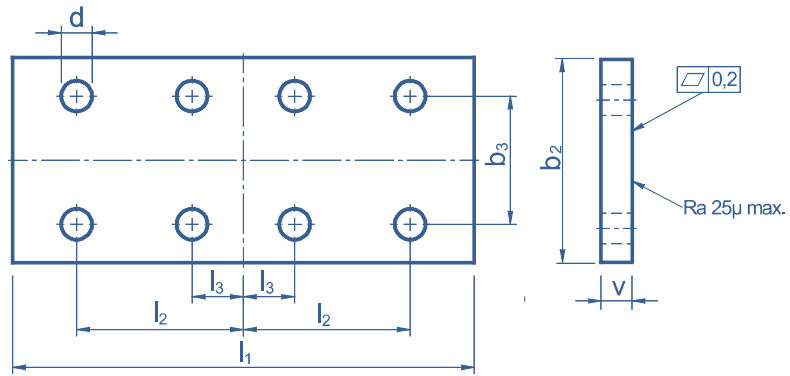
Existen diferentes opciones de placa (En T, Placa gruesa roscada y en forma de U...) con el mismo momento de inercia que la guía.

Fishplates with the same moment of inertia as the STAR guide rail

There are different options for fishplates (T Section, Thick Fishplates, U shape...) with the same moment of inertia as the guide rail.

Tabla comparativa de Placas
Fishplates Comparison table

	Placa en T T-Section	Placa gruesa Thick FP	Placa en U U-Shape
Peso / Weight	Ligero / Light	Pesado / Heavy	Intermedio / Moderate
Coste / Cost	Bajo / Low	Medio / Medium	Alto / High
Distancia requerida detrás de la guía Space required behind the guide rail	Máximo / Maximun	Medio / Moderate	Mínimo / Minimun



Placas / Fishplates - ISO 7465:2007

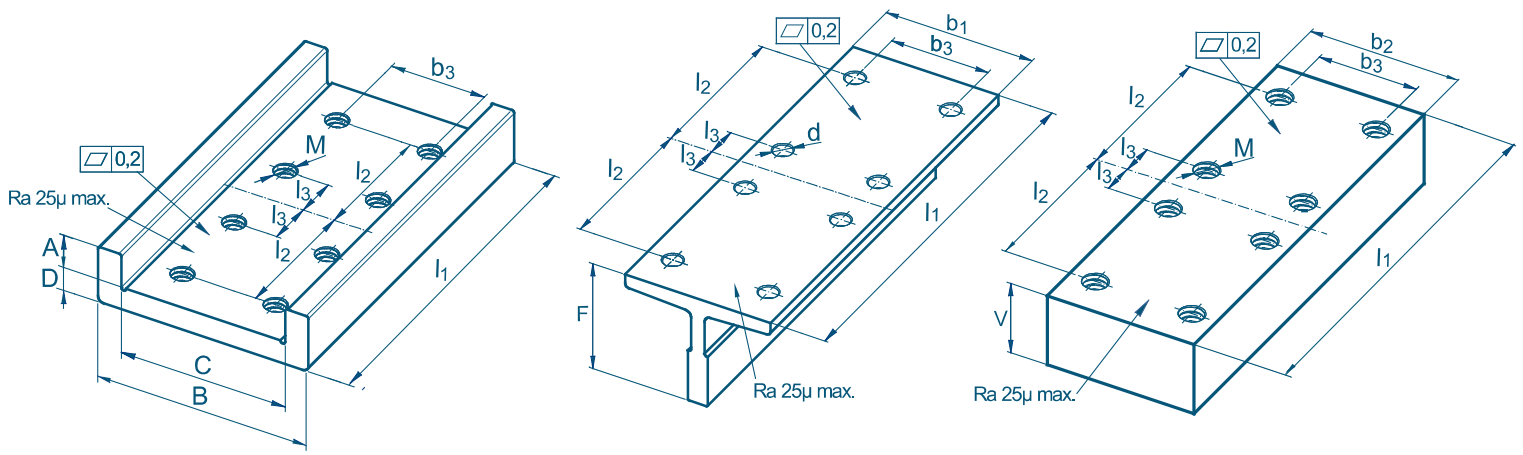
Placas Estándar y Roscadas
Standard and Tapped Fishplates

Distancia entre agujeros, guías y placas (mm)
Distance between holes, guide rails and fishplates (mm)

		d	b ₂	b ₃ ±0,20	l ₁ ⁺³ / ₋₀	l ₂ ±0,20	l ₃ ±0,20	V ⁺³ / ₋₀ SUPER	V ⁺³ / ₋₀ EXTRA STAR	Roscada Tapped	Tornillo Bolt	Arandela Washer
Calibradas / Cold drawn	T45/A	9	50	25	160	65	15	8	-	M8	M8	A-8
	T50/A	9	50	30	200	75	25	8	-	M8	M8	A-8
	T65/A	10,5	65	40	160	65	15	8	-	M10	M10	A-10
	T70/A	13	70	42	250	105	25	10	-	M12	M12	A-12
	T70-70-9/A	13	70	42	250	105	25	10	-	M12	M12	A-12
	T75/A	13	70	42	250	105	25	10	-	M12	M12	A-12
	T80-80-9/A	13	80	42	250	105	25	10	-	M12	M12	A-12
	T82/A	13	80	50,8	216	81	27	10	-	M12	M12	A-12
	T89/A	13	90	57,2	305	114,3	38,1	13	-	M12	M12	A-12
	T90/A	13	90	57,2	305	114,3	38,1	13	-	M12	M12	A-12
	T125-L1/A	17	130	79,4	305	114,3	38,1	18	-	M16	M16	A-16
	Cepilladas / Machined	T75/B	13	70	42	250	105	25	10	-	M12	M12
T78/B		13	70	42	250	105	25	10	-	M12	M12	A-12
T82/B		13	80	50,8	216	81	27	10	-	M12	M12	A-12
T89/B		13	90	57,2	305	114,3	38,1	13	28	M12	M12	A-12
T90/B		13	90	57,2	305	114,3	38,1	13	28	M12	M12	A-12
T114/B		17	120	70	305	114,3	38,1	18	28	M16	M16	A-16
T125/B		17	130	79,4	305	114,3	38,1	18	28	M16	M16	A-16
T127-1/B		17	130	79,4	305	114,3	38,1	18	28	M16	M16	A-16
T127-2/B		17	130	79,4	305	114,3	38,1	18	28	M16	M16	A-16
T140-1/B		21	140	92,1	380	152,4	31,8	28	38	M20	M20	A-20
T140-2/B		21	140	92,1	380	152,4	31,8	28	38	M20	M20	A-20
T140-3/B		21	140	92,1	380	152,4	31,8	38	48	M20	M20	A-20

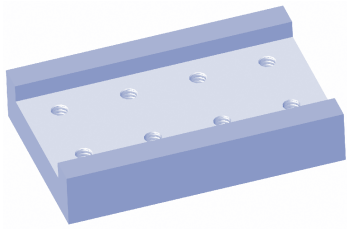
Espesores especiales de placas(V)
Special Thickness of the Fishplates(V)

		13	14	15	19	24	29	34	39	44	49	54	59	74	94	Placa en T T section
Calibradas / Cold drawn	T45/A															
	T50/A															
	T65/A				X											
	T70/A				X											X
	T70-70-9/A		X		X		X			X						X
	T75/A		X		X		X			X						X
	T80-80-9/A															X
	T82/A	X			X		X									X
	T89/A			X	X	X	X		X	X	X					X
	T90/A			X	X	X	X		X	X	X					X
	T125-L1/A															X
	Cepilladas / Machined	T75/B		X		X		X			X					
T78/B			X		X		X			X						X
T82/B		X			X		X									X
T89/B				X	X	X	X		X	X	X					X
T90/B				X	X	X	X		X	X	X					X
T114/B					X											X
T125/B					X	X	X	X		X	X	X				X
T127-1/B					X	X	X	X		X	X	X				X
T127-2/B					X	X	X	X		X	X	X				X
T140-1/B								X	X	X	X	X		X		X
T140-2/B								X	X	X	X	X		X		X
T140-3/B										X	X	X			X	X



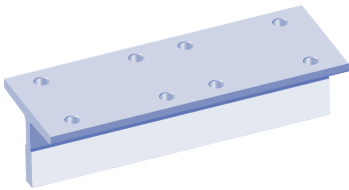
Placas con el mismo momento de inercia que la guía / Fishplates with the same moment of inertia as the guide rail

Placa en U U shape



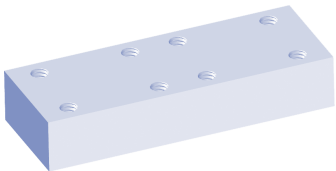
Dimensiones (mm) Dimensions (mm)										
	M	$b_3 \pm 0,2$	$l_1 \begin{smallmatrix} +3 \\ -0 \end{smallmatrix}$	$l_2 \pm 0,2$	$l_3 \pm 0,2$	A	B	C	D	Peso Weight kg/piece
T127-2/B	M16	79,4	305	114,3	38,1	20	200	140	40	21,4
T140-1/B	M20	92,1	380	152,4	31,8	30	215	160	50	36,8
T140-2/B	M20	92,1	380	152,4	31,8	30	215	160	50	36,8
T140-3/B	M20	92,1	380	152,4	31,8	40	215	160	62	46,2

Placa en T T section



Dimensiones (mm) Dimensions (mm)								
	d	$b_1 \pm 1,5$	$b_3 \pm 0,2$	$l_1 \begin{smallmatrix} +3 \\ -0 \end{smallmatrix}$	$l_2 \pm 0,2$	$l_3 \pm 0,2$	$F \begin{smallmatrix} +3 \\ -0 \end{smallmatrix}$	Peso Weight kg/piece
T127-2/B	17	127	79,4	305	114,3	38,1	88	6,86
T140-1/B	21	140	92,1	380	152,4	31,8	107	10,6
T140-2/B	21	140	92,1	380	152,4	31,8	101	12,96
T140-3/B	21	140	92,1	380	152,4	31,8	126	17,48

Placa gruesa roscada Thick, tapped fishplate



Dimensiones (mm) Dimensions (mm)								
	M	$b_2 \pm 0,2$	$b_3 \pm 0,2$	$l_1 \begin{smallmatrix} +3 \\ -0 \end{smallmatrix}$	$l_2 \pm 0,2$	$l_3 \pm 0,2$	$V \begin{smallmatrix} +3 \\ -0 \end{smallmatrix}$	Peso Weight kg/piece
T127-2/B	M16	130	79,4	305	114,3	38,1	59	17,5
T140-1/B	M20	140	92,1	380	152,4	31,8	74	29,5
T140-2/B	M20	140	92,1	380	152,4	31,8	74	29,5
T140-3/B	M20	140	92,1	380	152,4	31,8	94	38,1

Tipos de Embalaje Types of Packing	Dimensiones Dimensions
Caja de madera con taco Wooden Box with skids	900x600x360 mm 640x440x330 mm 600x300x240 mm
Caja de madera sin taco Wooden Box without skids	340x300x180 mm 430x180x180 mm 290x200x200 mm 290x200x125 mm
Caja de cartón con base de madera Cardboard Box with wooden base	860x540x340 mm 600x400x310 mm 560x260x220 mm
Caja de cartón Cardboard Box	310x260x150 mm 400x150x150 mm 260x170x170 mm 260x175x195 mm

Suministro de Tornillos

Supply of Screws

	Sets por bolsa Sets per bag
M8	8
M12	8
M16	8
M20	8

RideFishplates

Placas de Unión

